

# State of Wyoming Corner Record

(In compliance with the **CORNER PERPETUATION AND FITTING ACT**, Wyoming Statutes, 1977 Section 36-11-101, et. seq., and the Rules and Regulations of the Board of Professional Engineers and Professional Land Surveyors)

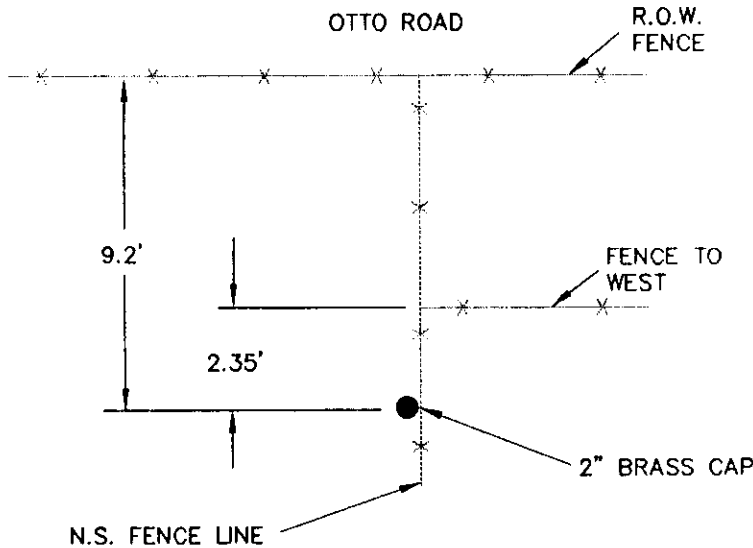
Reverse side of this form may be used if more space is needed.

Record of original survey and citation of source of historical information (if corner is lost or obliterated). Description of corner monumentation evidence found and/or monument and accessories established to perpetuate the location of this corner. Sketch of relative location of monument, accessories, and reference points with course and distance to adjacent corner(s) (if determined in this survey). Method and rationale for reestablishment of lost or obliterated corner.

## NORTHEAST CORNER SECTION 24, TOWNSHIP 13 NORTH, RANGE 68 WEST

FOUND : 2" BRASS CAP IN NORTH--SOUTH FENCE LINE  
 WITH NO MARKINGS ON CAP  
 PINK GRANITE STONE LYING ON ITS SIDE  
 NEXT TO BRASS CAP  
 STONE MEASURED 1.15' X 0.5' X 0.7'  
 STONE HAS 3 MARKS ON TWO OPPOSITE SIDES

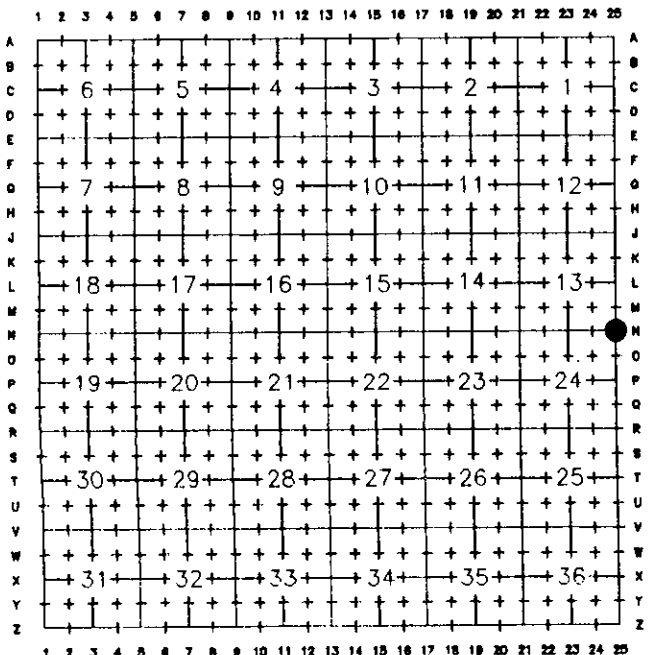
### Monument location



RECEIVED  
 LARAMIE COUNTY CLERK  
 OFFICE  
 1509554  
 1994 SEP 23 AM 11:17

Date of Field Work: 8/19/94

### Cross Index Plat



Firm/Agency, Address

Coffey & Associates, L.L.C.  
903 Grand Ave.  
Laramie, Wyoming 82070  
 Telephone Number: 742-7425

This corner record was prepared by me or under my direction and supervision.

SEAL & SIGNATURE



Corner Name Northeast Corner Section 24, T 13 N, R 68 W, 6th P.M.  
 County: Laramie Wyoming

Cross-Index No.: N-25

BOOK 1383

1745